

School Year 2009-2010

Nevada State High School

Adequate Yearly Progress Report for 2009-2010 School Year *PRELIMINARY RESULTS

School ID Number: 18401.3

School District: State

Grades Served: 12-Nov

Principal: Dr. Wendi Hawk

Address: 303 South Water Street
Henderson, NV 89015

Phone: 702-953-2600

School Designation: Continuing Exemplary

Designation Area Status:

ELA	Adequate
Math	Adequate
Other Indicator	Adequate

AYP Classification Information:

Nevada State High School has been classified as a school which demonstrated Adequate Yearly Progress during the 2009-2010 school year. Classification as demonstrating AYP is due to the school's meeting all No Child Left Behind criteria in the areas of English language arts (ELA), mathematics, and the school-wide other indicator.

AYP Report Information:

This report contains information regarding the performance of this school during the 2009-2010 school year under the NCLB accountability model. Worksheet tabs, along the bottom of this file, report performance of the school in all AYP criteria. Click on any of the 'Questions?' links in this report to get more information.

Student Demographics:

Eligible Population: 70 students

Race & Ethnicity Composition	
American Indian / Alaskan Native	0.0%
Asian / Pacific Islander	12.9%
Hispanic / Latino	22.9%
Black / African American	4.3%
White / Caucasian	60.0%

Students with an IEP:	1.4%
Limited English Proficient (LEP) Students:	0.0%
Students Receiving Free or Reduced Price Lunch:	10.0%

Students Continuously Enrolled: 95.7%

Title I Funded School? No

Nevada State 2009-2010 AYP Results

Population	ELA Participation	ELA Achievement		Math Participation	Math Achievement		Other Indicator
		ELA Status	ELA Safe Harbor		Math Status	Math Safe Harbor	
School	Yes	Yes	-	Yes	Yes	-	Yes
American Indian / Alaskan Native	NA	***	***	NA	***	***	
Asian / Pacific Islander	Yes	***	***	Yes	***	***	
Hispanic / Latino	Yes	***	***	Yes	***	***	
Black / African American	Yes	***	***	Yes	***	***	
White / Caucasian	Yes	Yes	-	Yes	Yes	-	
IEP	Yes	***	***	Yes	***	***	
LEP	NA	***	***	NA	***	***	
FRL	Yes	***	***	Yes	***	***	

Color Key	
	Did Not Make Adequate Yearly Progress
	WARNING: Status Level Below Baseline
	Sample Size Too Small to Evaluate
	Criteria Met Through Appeal

NA Denotes Sample Size = 0; Participation Rate Analysis Not Applicable
 *** Denotes Sample Size < 25; Status and Safe Harbor Evaluations Not Applicable
 * Denotes Safe Harbor Not Made Due To Other Indicator
 - Denotes Data Not Available
 UA Denotes 2 or 3 Year Uniform Averaging Appeal Applied

Nevada State	ELA Participation				Math Participation			
Population	Enrollment	ELA Participation (N >= 20)	ELA Participation (N < 20)	Make ELA Participation?	Enrollment	Math Participation (N >= 20)	Math Participation (N < 20)	Make Math Participation?
School	70.0	100.00%		Yes	70.0	100.00%		Yes
American Indian / Alaskan Native	0.0	-	-	NA	0.0	-	-	NA
Asian / Pacific Islander	9.0	-	9.0	Yes	9.0	-	9.0	Yes
Hispanic / Latino	16.0	-	16.0	Yes	16.0	-	16.0	Yes
Black / African American	3.0	-	3.0	Yes	3.0	-	3.0	Yes
White / Caucasian	42.0	100.00%		Yes	42.0	100.00%		Yes
IEP	1.0	-	1.0	Yes	1.0	-	1.0	Yes
LEP	0.0	-	-	NA	0.0	-	-	NA
FRL	7.0	-	7.0	Yes	7.0	-	7.0	Yes

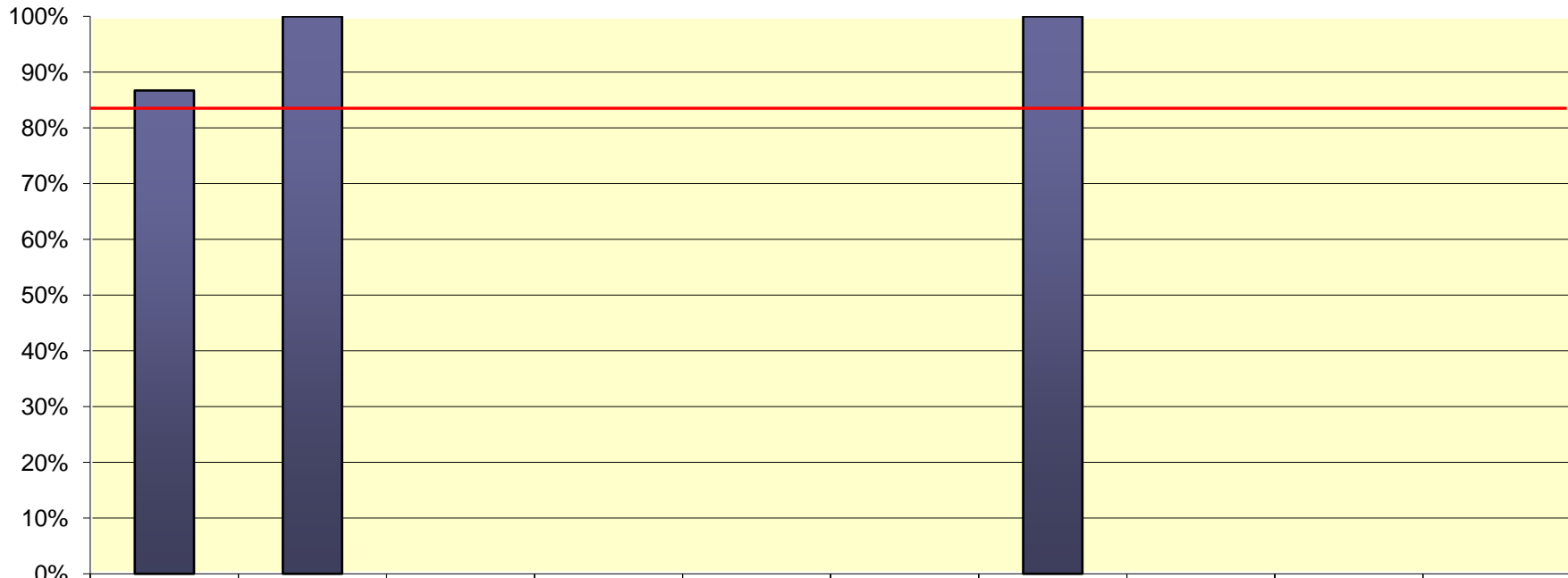
Color Key

NA	Participation Rate Analysis Not Applicable; Sample Size = 0
	Participation Rate Target Not Met
Appealed	Participation Rate Target Met Through Appeal

Participation Rate Goals

Group Size	Goal
N>=20	95%
N<20	N-1

2008-2009 School Year ELA Status

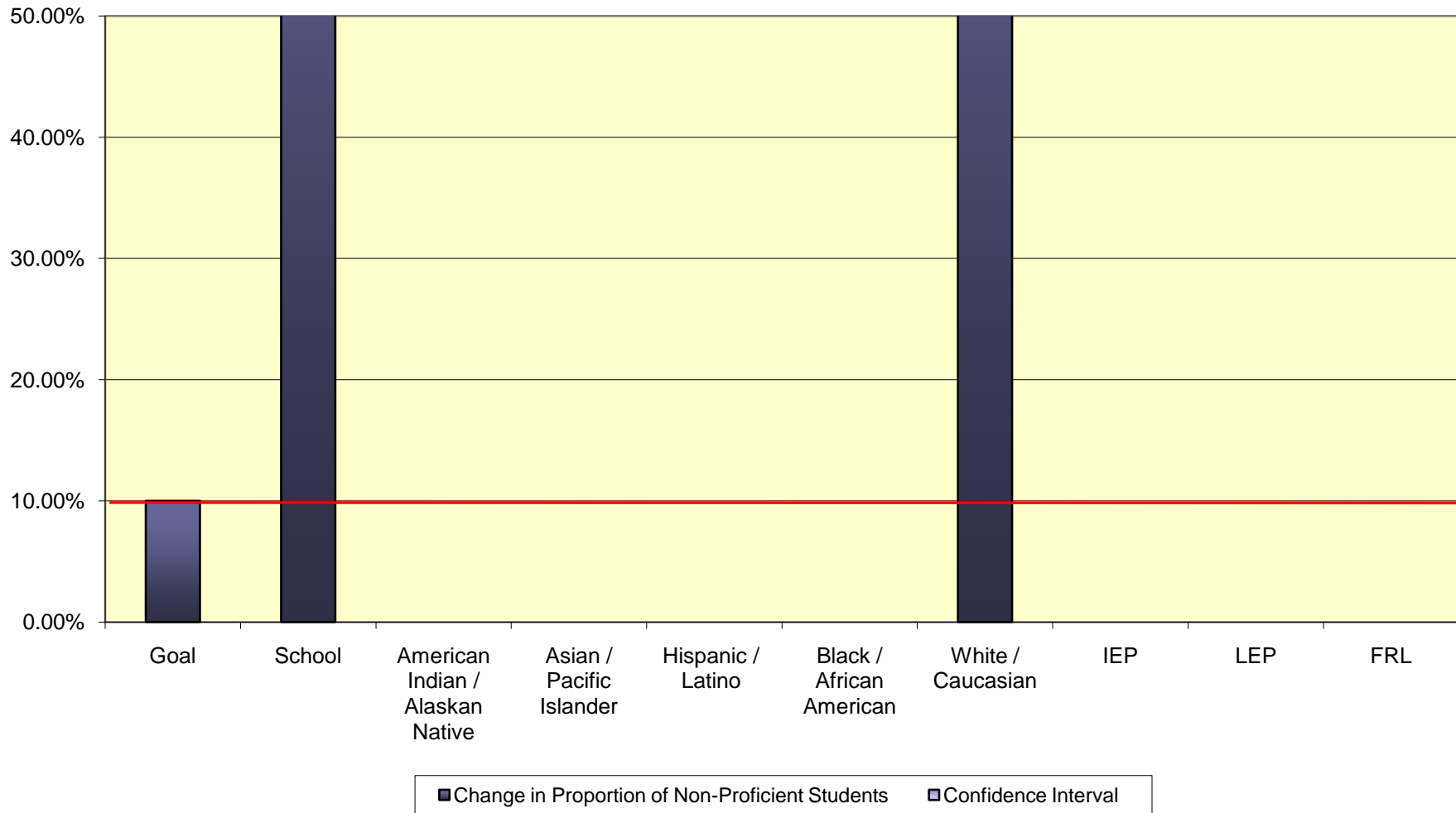


Goal	School	American Indian / Alaskan Native	Asian / Pacific Islander	Hispanic / Latino	Black / African American	White / Caucasian	IEP	LEP	FRL
N-Size	67.0	0.0	9.0	16.0	3.0	39.0	1.0	0.0	7.0

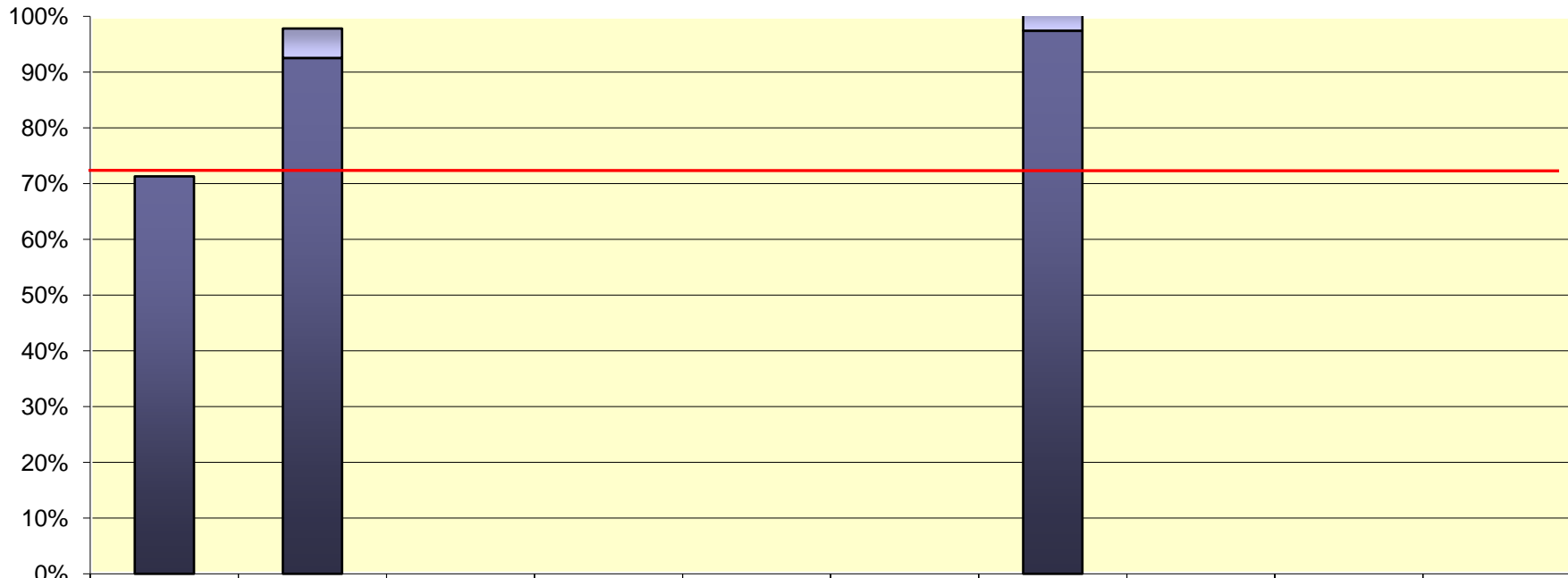
Nevada State - ELA

■ Confidence Interval
■ Percent Above Cut

2008-2009 School Year ELA Reduction in Non-Profit Students



2008-2009 School Year Math Status

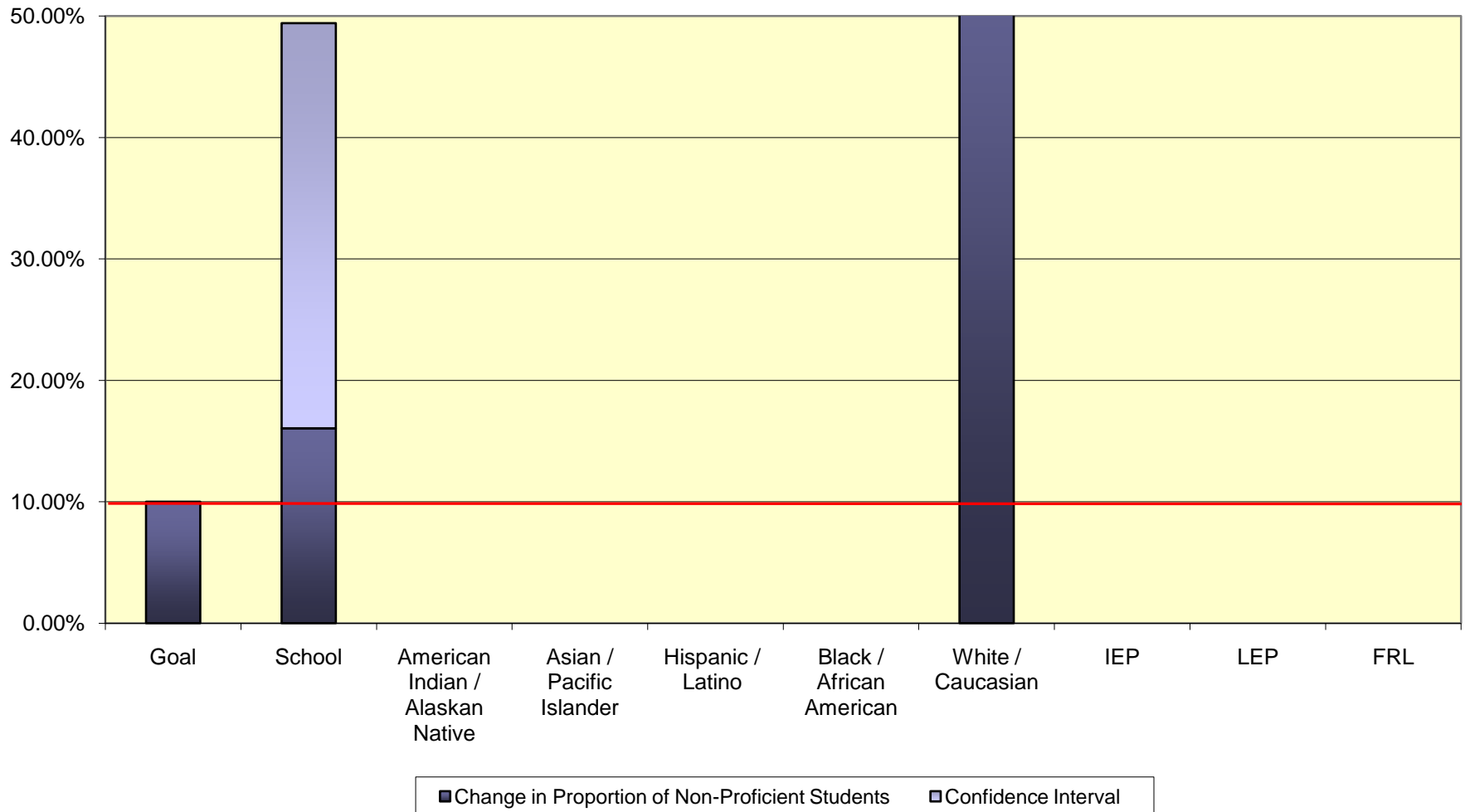


Goal	School	American Indian / Alaskan Native	Asian / Pacific Islander	Hispanic / Latino	Black / African American	White / Caucasian	IEP	LEP	FRL
N-Size	67.0	0.0	9.0	16.0	3.0	39.0	1.0	0.0	7.0

Nevada State - Math

■ Confidence Interval
■ Percent Above Cut

2008-2009 School Year Math Reduction in Non-Proficient Students



Nevada State	Graduation Rate		Average Daily Attendance		Make Other Indicator?
	2008-2009	2007-2008	2009-2010	2008-2009	
Population					
School	99.12%	-			Yes
American Indian / Alaskan Native	100.00%	-			Yes
Asian / Pacific Islander	100.00%	-			Yes
Hispanic / Latino	100.00%	-			Yes
Black / African American	100.00%	-			Yes
White / Caucasian	98.53%	-			Yes
IEP	-	-	98.00%	-	Yes
LEP	-	-	-	-	NA
FRL	-	-	98.76%	-	Yes

Color / Code Key	
	School Did Not Make AYP Due To Other Indicator
	Other Indicator Target For Disaggregated Group Not Met
	WARNING: Other Indicator Target Met Due to Growth
	Other Indicator Target Met Through Appeal
-	Other Indicator Data Not Available
NA	Not Applicable (No Data to Analyze)

Source Data for Graphs	Current Year AYP Data			
Nevada State	2009-2010	Population	PAC	CI
Nevada State - ELA	N-Size	Goal	86.70%	
	67.0	School	100.00%	0.00%
	0.0	American Indian / Alaskan Native	0.00%	0.00%
	9.0	Asian / Pacific Islander	0.00%	0.00%
	16.0	Hispanic / Latino	0.00%	0.00%
	3.0	Black / African American	0.00%	0.00%
	39.0	White / Caucasian	100.00%	0.00%
	1.0	IEP	0.00%	0.00%
	0.0	LEP	0.00%	0.00%
	7.0	FRL	0.00%	0.00%

Previous AYP Data		
PAC	N-Size	CI
90.56%	90.0	5.07%
0.00%	0.0	0.00%
90.91%	11.0	14.26%
83.33%	12.0	17.70%
0.00%	7.0	0.00%
91.67%	60.0	5.87%
0.00%	1.0	0.00%
0.00%	1.0	0.00%
0.00%	0.0	0.00%

Growth Analysis		
Change	CI Change	Safe Harbor
10.00%		
#####	22.03%	122.03%
0.00%	0.00%	0.00%
0.00%	0.00%	0.00%
0.00%	0.00%	0.00%
#####	28.90%	128.90%
0.00%	0.00%	0.00%
0.00%	0.00%	0.00%
0.00%	0.00%	0.00%

Nevada State - Math	N-Size	Goal	71.30%	
	67.0	School	92.54%	5.28%
	0.0	American Indian / Alaskan Native	0.00%	0.00%
	9.0	Asian / Pacific Islander	0.00%	0.00%
	16.0	Hispanic / Latino	0.00%	0.00%
	3.0	Black / African American	0.00%	0.00%
	39.0	White / Caucasian	97.44%	4.16%
	1.0	IEP	0.00%	0.00%
	0.0	LEP	0.00%	0.00%
	7.0	FRL	0.00%	0.00%

91.11%	90.0	4.93%
0.00%	0.0	0.00%
100.00%	11.0	0.00%
91.67%	12.0	13.12%
0.00%	7.0	0.00%
91.67%	60.0	5.87%
0.00%	1.0	0.00%
0.00%	1.0	0.00%
0.00%	0.0	0.00%

10.00%		
16.04%	33.37%	49.41%
0.00%	0.00%	0.00%
0.00%	0.00%	0.00%
0.00%	0.00%	0.00%
69.23%	35.43%	104.67%
0.00%	0.00%	0.00%
0.00%	0.00%	0.00%
0.00%	0.00%	0.00%

School Year 2009-2010